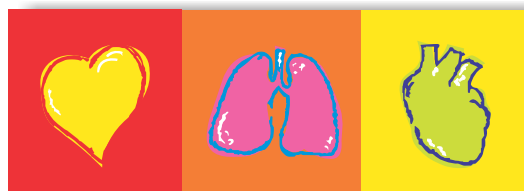


CereTom[®]

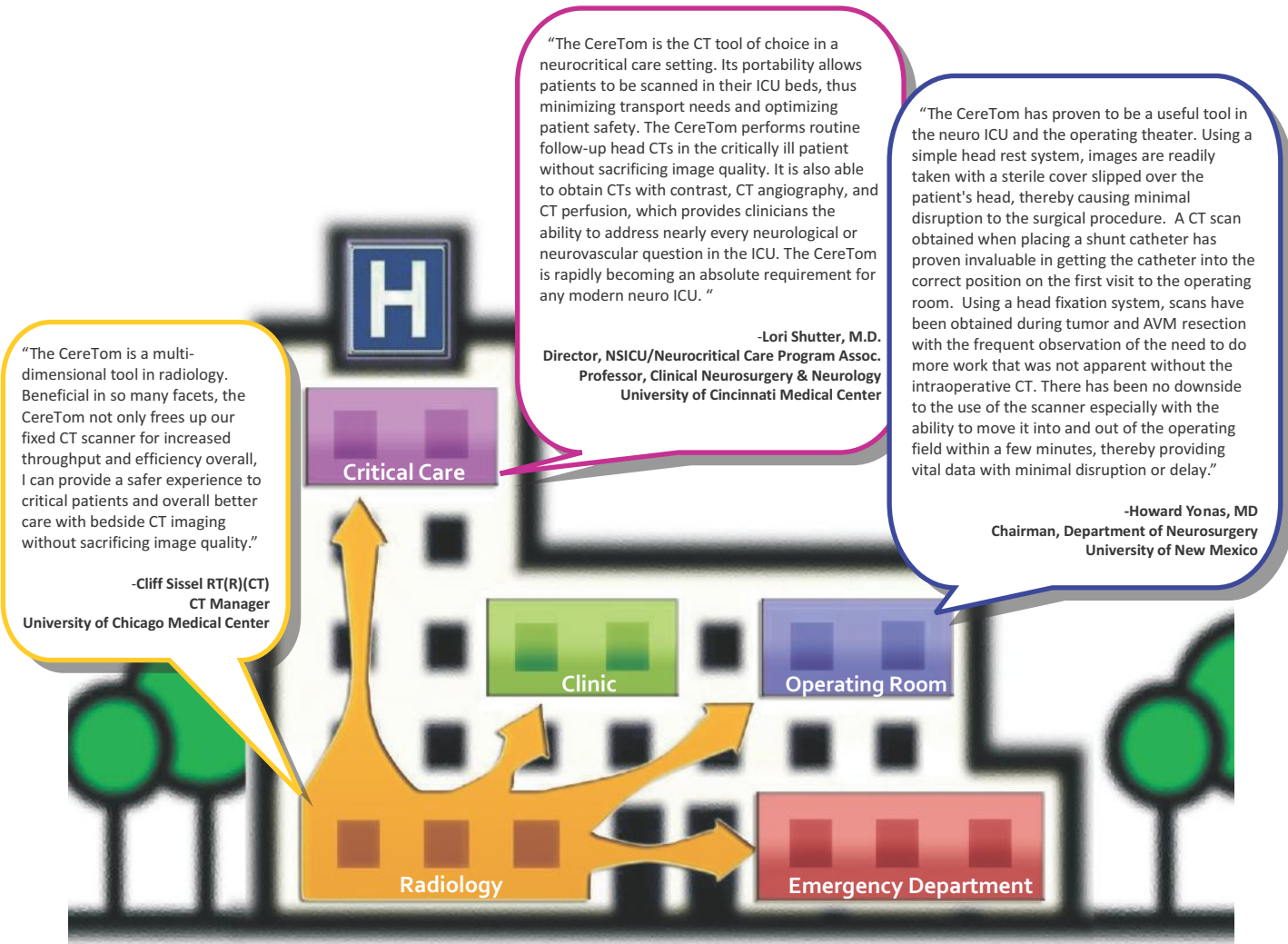
Portable CT Scanner



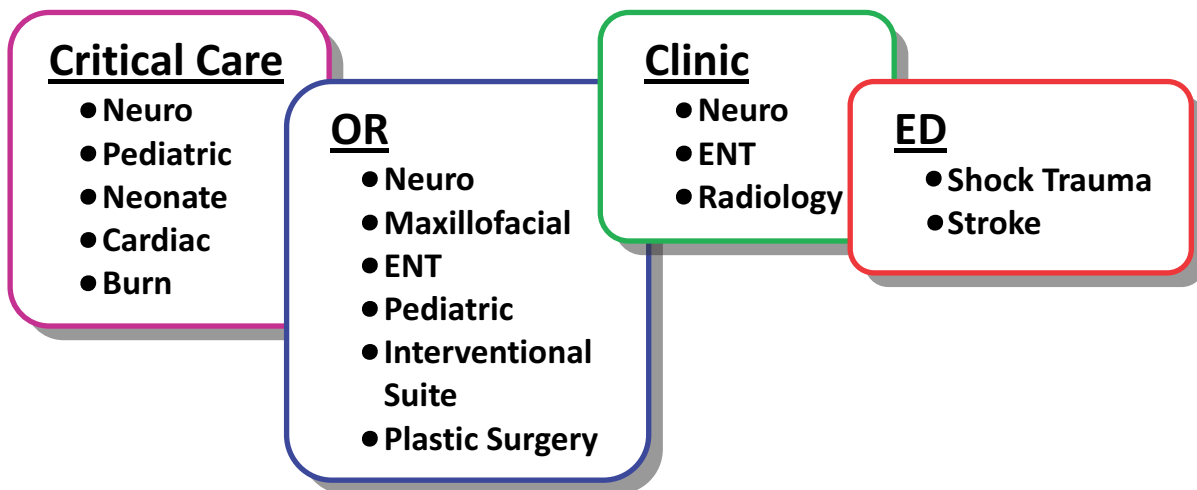
SCHILLER

The Art of Diagnostics

Your Multi Departmental Imaging Solution



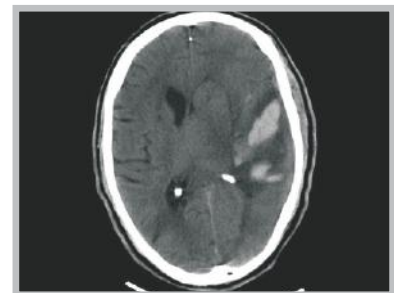
Extending Radiology's Reach Into...



Critical Care (Neuro, Pediatric, Neonate, Cardiac, Burn)

"The ability to perform portable head CT scans of high quality in our ICU has dramatically improved both efficiency and safety of the care we provide our patients. Critically ill patients who often are on ventilators and intravenous infusions to maintain stability no longer have to leave the safety of the ICU to undergo timely diagnostic brain imaging. The number of personnel involved in obtaining this study is dramatically decreased as well. The critical care nurse no longer has to leave the ICU setting, eliminating the need for cross-coverage by her colleagues of her other responsibilities. The respiratory therapist no longer needs to be tied up with transporting the patient to and from the radiology suite and the patient is not subjected to the dangers of transport which include such critical events as unplanned extubation or hypoxia."

-Michael S. Rosenblatt, M.D., M.P.G., M.B.A., F.A.C.S.
Associate Director, Surgical Intensive Care Unit
Director, Trauma Service: Lahey Clinic



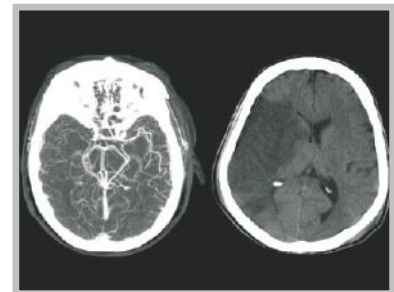
Operating Room (Neuro, Maxillofacial, ENT, Pediatric, Interventional Suite, Plastic Surgery)

The CereTom® combined with the DORO CereTom® Radiolucent Skull Clamp and Horseshoe provide reliable head fixation and fast, high quality intraoperative imaging capabilities for a variety of neurosurgical procedures. The CereTom® images are compatible with all surgical navigation systems. Intraoperative images can be easily uploaded by PACS connection or CD/USB drive. The CereTom® OR package provides you with affordable, real-time intraoperative scanning, enhancing surgical navigation and improving operating room workflow as well as surgical outcomes.



Emergency Department (Shock Trauma, Stroke)

Rapid triage and management of patients with acute neurological symptoms are key elements to emergency room care. The CereTom® Portable CT scanner is a complete scanning tool for neurological emergencies including stroke, hemorrhage and traumatic brain injuries.



Core System

The CereTom® Portable CT Scanner

The CereTom® is an 8-slice CT scanner that delivers the highest quality Non-Contrast, Angiography, Contrast Perfusion and Xenon Perfusion scans in every conceivable patient location.

Its combination of rapid scan time, flexible settings and immediate image viewing, make it an indispensable tool to any clinician needing real time data on critically ill patients.



CereTom® Imaging Station

The CereTom® Imaging Station comes installed with Barco's Voxar 3D™ advanced visualization software package allowing for 2D, 3D and MPR viewing.

The workstation produces DICOM 3 compliant images and with the modality worklist module, allows for seamless integration with every known PACS system.

With its wireless communication capability, the CereTom® stands ready to interface into the modern hospital information technology age.



CereTom® Scan Board & Bed Adapter

Every CereTom® comes complete with a radiolucent scan board and bed adapter. This combination allows virtually every hospital bed to rapidly transform into a safe and stable scanning platform. Your patient never leaves the safety of their room in the unit.



CereTom® Core System

Features

8 Slice True CT Scanner

- Complete self contained lead shielding
- Onboard 10" LCD touch screen
- DICOM 3 images compliant with CereTom modality worklist module
- Integrates with all PACS
- 1.25, 2.5, 5.0, 10.0 mm slice thickness

Laptop Imaging Computer with 17" hi-res Monitor

- **Hardware**
 - Processor: Intel® Core™ 2 Duo Processor 3 GHz
 - Memory: 2 GB
 - Hard Drive: 120 GB
 - OS: Windows XP Professional
 - Monitor Resolution: 1920 x 1200
- **Advanced Visualization Software Package (Barco's Voxar 3D™)**
 - 2D
 - 3D
 - MPR viewing

Radiolucent Universal Scan Board

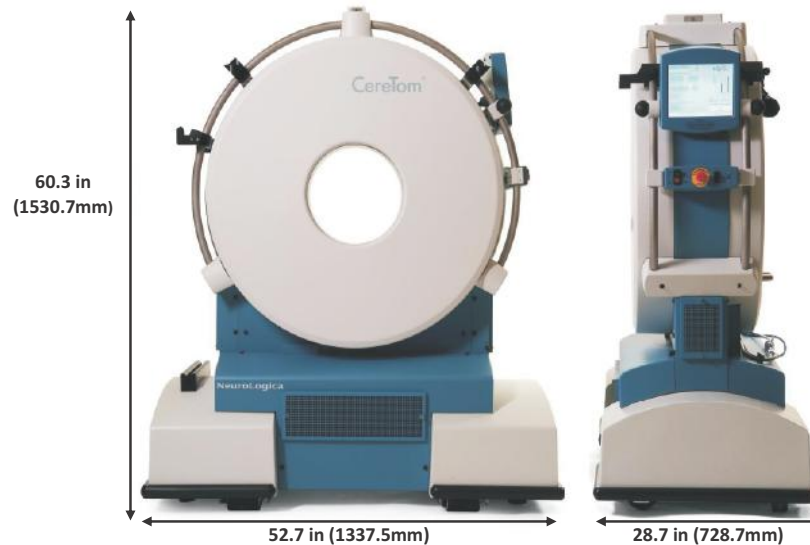
- Radiolucent Carbon Fiber Material
- Compatible with all bed types
 - Stryker
 - Hill-Rom
 - KCI
- Attaches to the head of the bed
- Patient slides up
- Board attaches to scanner for easy transport
- Allows for patient to be scanned in their OWN bed

Bed Adapter

- Designed to fit any bed
- Allows for optimized position of scan board for patient bedside scanning
- Adapter allows for any bed to convert into the CereTom® Scanning Platform

Dimensions

Bore Diameter: 32.5 cm (318mm)
Weight: <900 lbs/(408kg)



About Us

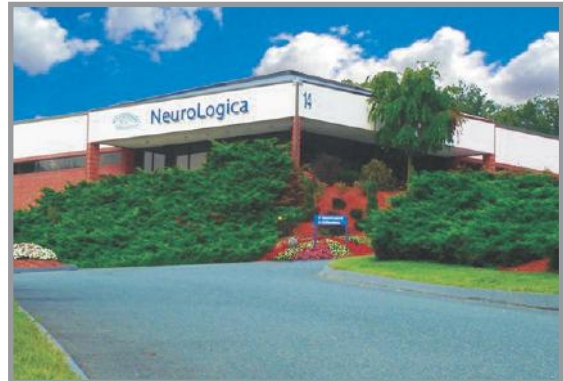


Schiller India

Schiller Healthcare India Pvt. Ltd. is a subsidiary of Schiller AG of Switzerland, a world leader in Medical Diagnostic Solutions, with presence in over 100 countries across the world. Currently, our product range covers Critical Care, Cardiology, Radiology, Telemedicine, Cardiopulmonary, Anaesthesia and Surgery. Schiller, a pioneer in portable electronic ECG machines is one of the fastest growing medical equipment companies in India. A combination of high quality products and ability to successfully market them has helped Schiller India in substantially cornering a higher pie of the medical equipment market. We currently have over 50,000 installations across India and Nepal.

NeuroLogica

NeuroLogica Corporation, USA, manufactures and markets innovative medical imaging equipment for healthcare facilities and private practices worldwide. Established in 2004, NeuroLogica's founders have over 100 years of combined experience in the design, development and manufacturing of imaging systems including ultrasound, CT, PET, radiation therapy and MRI. NeuroLogica is ISO 13485:2003 and ISO 9001:2008 certified. The CereTom is FDA cleared, ETL approved and CE marked. The original CereTom system, launched in 2005 and is currently in use in intensive care units, neurosurgical operating rooms, emergency rooms, stroke centers and clinics, of many of the top Neuroscience programs around the globe.



Manufactured by: Neurologica Corporation, USA

Accessories shown are not part of standard configuration * All registered trademarks acknowledged.

Technical data are subject to change without notice

sales@schillerindia.com Support@schillerindia.com Website : www.schillerindia.com

Toll-Free No. : 1800 2098998

SCHILLER

The Art of Diagnostics

Swiss H.Q.: Schiller AG, Altgasse 68, P. O. Box 1052, CH -6341 Baar, Switzerland,
 Indian Corporate Office : Schiller Healthcare India Pvt. Ltd., Advance House, 2nd Floor,
 Makwana Road, Marol Naka station, Andheri (East), Mumbai - 400 059.
 Tel. : + 91 - 22 - 61523333 / 29209141 Fax : +91-22 - 29209142
 E - mail : sales@schillerindia.com, support@schillerindia.com
 Factory : No. 17, Balaji Nagar, Puducherry 605010

| | | |
|--|---------------------------------------|---------------------------------------|
| Regional / Branch Offices: | Ahmedabad: 079-40307190/ 09327031678 | Email: sales.west@schillerindia.com |
| Bengaluru: 080-26564045/ 09379306923 | Email: sales.south2@schillerindia.com | Bhopal: 0755-4274421/09303124973 |
| Email: sales.central@schillerindia.com | Chennai: 044-28232648, 09383620520 | Email: sales.south1@schillerindia.com |
| Hyderabad: 040-32952969/09379036923 | Email: sales.south2@schillerindia.com | Kathmandu: 00977-9841490096 |
| Email: sales.nepal@schillerindia.com | Kochi: 0484-2203264/09383620520 | Email: sales.south1@schillerindia.com |
| Kolkata: 033-23593102/09874766668 | Email: sales.east@schillerindia.com | Lucknow: 0522-4076659/09312432205 |
| Email: sales.north@schillerindia.com | Mumbai: 022-61523333/ 09323799863 | Email: sales.west@schillerindia.com |
| New Delhi: 011-32600582/09312432205 | Email: sales.north@schillerindia.com | Patna: 0612 - 2570745 / 09334833045 |
| Email: sales.east@schillerindia.com | Puducherry: 09383620520 | Email: sales.south1@schillerindia.com |
| Email: sales.west@schillerindia.com | Pune: 020-24210657/09371020520 | |
| | CIN: U33110MH1997PTC111307 | |

Authorised Dealer